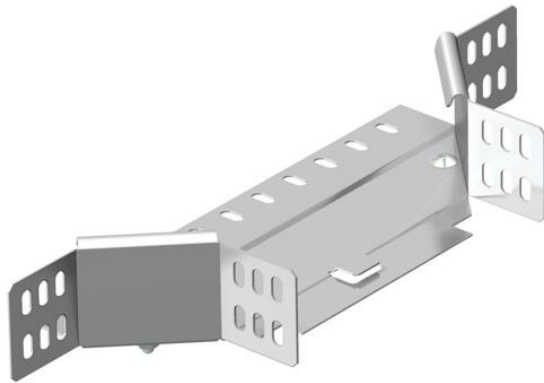


# Technical data sheet

## Mounting/branch piece 60 A4

Item number: 7136135



Add-on tee for horizontal and vertical use. For all cable tray types of 60 mm side height.  
The fitting is shipped in an unmounted state.  
Including appropriate fastening material.



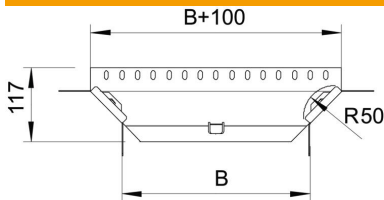
**A4** Stainless steel

**2B** Bright, treated

### Master data

Item number	7136135
Type	RAA 620 A4
Description 1	Add-on tee
Description 2	with 2 angle connectors
Manufacturer	OBO
Dimension	60x200
Material	Stainless steel
Surface	Bright, treated
Surface standard	
Smallest sales unit	1
Unit of quantity	Piece
Weight	53.2 kg
Weight unit	kg/100 pc.

### Dimensions



Width	200 mm
Width	12 in
Height	60 mm
Height	2 in
Dimension B	200 mm
Dimension R	50 mm

# Technical data sheet

## Mounting/branch piece 60 A4

Item number: 7136135



### Technical data

Bend (angle)	90°
Connector version	Supplied connectors
Material thickness, floor plate	1 mm
Change of direction	Horizontal
Type of connector, cable support system	Screwed
Rail thickness	1.25 mm