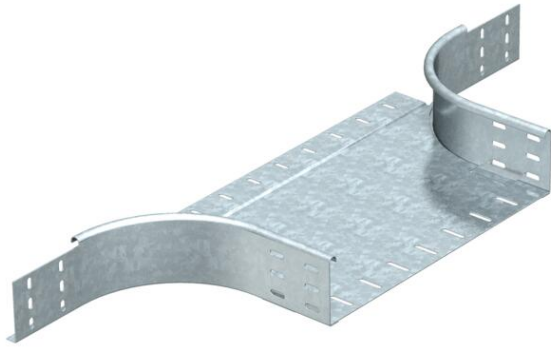


Technical data sheet

Add-on tee 85 FT

Item number: 7122608



Add-on tee for horizontal and vertical use. For all cable tray types of 85 mm side height.
Fitting in round design. The interior radius of the fitting is 150 mm. Fastening materials should be ordered separately.



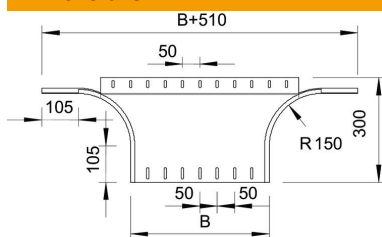
St Steel

FT Hot-dip galvanised

Master data

Item number	7122608
Type	RAA 860 FT
Description 1	Add-on tee
Description 2	round version
Manufacturer	OBO
Dimension	85x600
Material	Steel
Surface	Hot-dip galvanised
Surface standard	DIN EN ISO 1461
Smallest sales unit	1
Unit of quantity	Piece
Weight	320 kg
Weight unit	kg/100 pc.

Dimensions



Width	600 mm
Width	24 in
Height	85 mm
Height	3 in
Dimension B	600 mm
Dimension R	150 mm

Technical data sheet

Add-on tee 85 FT

Item number: 7122608



Technical data

Bend (angle)	90°
Connector version	Without connectors
Maintain electrical functions	no
Material thickness, floor plate	1.5 mm
NATO hole pattern	no
Change of direction	Horizontal
Rustproof steel, pickled	no
Wide-span version	no
Type of connector, cable support system	Screwed
Rail thickness	1.25 mm